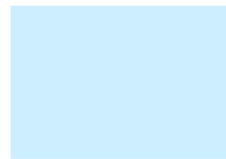
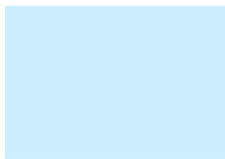
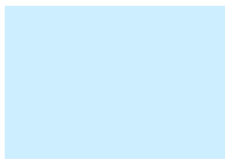
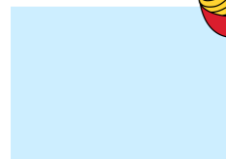
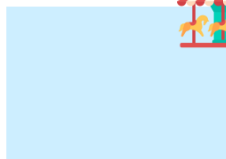
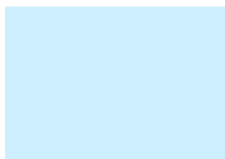
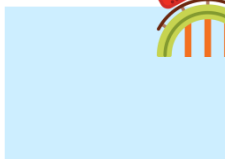
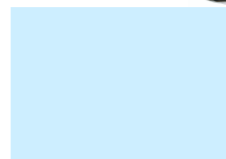
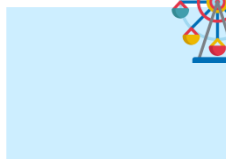
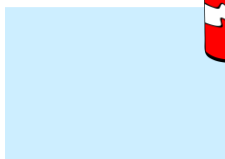
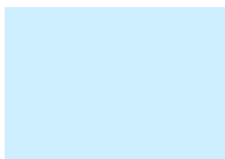




뚜루뚜루와 놀이공원에 가요





부록) 예산을 계획해봐요



예산 : 120,000원

(예) 추천코스 - 성인 2명, 어린이 2명

롤러코스터
24,000원

음료수
8,000원

관람차
16,000원

우동
20,000원

범퍼카
24,000원

회전목마
12,000원

사용 경비 : (104,000)원

코스를 정한 뒤 예산을 계획해보세요

놀이기구

목록	성인	어린이
롤러코스터	7,000	5,000
회전목마	4,000	2,000
범퍼카	7,000	5,000
관람차	5,000	3,000

먹을거리

목록	금액
우동	5,000
음료수	2,000
김밥	3,500

Blank area for planning the budget with empty shapes for items and amounts.

예산 경비 : ()원